



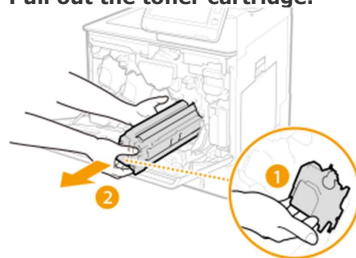
1

Open the front cover.



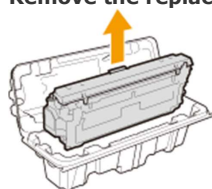
2

Pull out the toner cartridge.



3

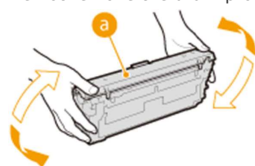
Remove the replacement toner cartridge from the protective case.



4

Shake the toner cartridge five or six times as shown below to evenly distribute the toner inside the cartridge, and then place it on a flat surface.

Do not remove the drum protective cover (a) in this step.



5

Remove the drum protective cover.



6

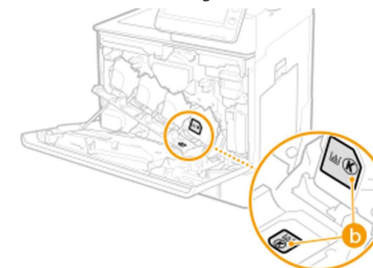
Install the toner cartridge.

Align the toner cartridge with the toner guide (a) and push it into the slot until it stops.



IMPORTANT:

Be careful that the drum portion does not get hit against the mouth of the slot. Place the toner cartridge into the slot marked with the appropriate color label (b).



7

Close the front cover.

