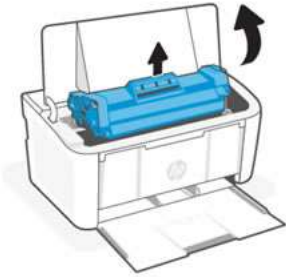


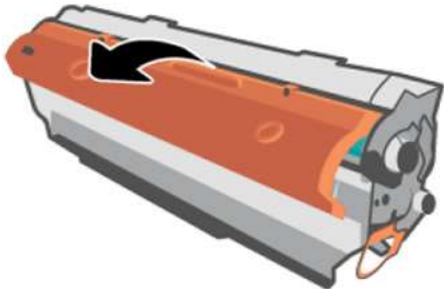
1. Open the toner access door, and then remove the cartridge.



2. Remove the new cartridge from its packaging.



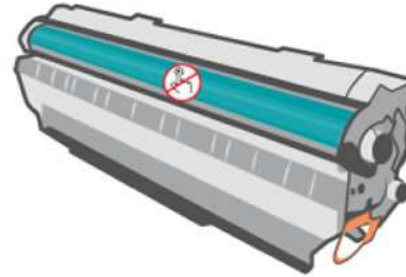
3. Remove the orange cover from the cartridge.



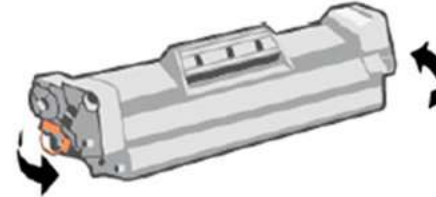
4. Grasp the cartridge by its sides, and then rock the cartridge side to side five or six times to evenly distribute the toner.

**CAUTION:**

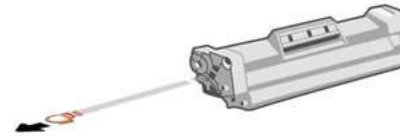
Do not touch the imaging drum surface. Fingerprints can cause print quality problems.



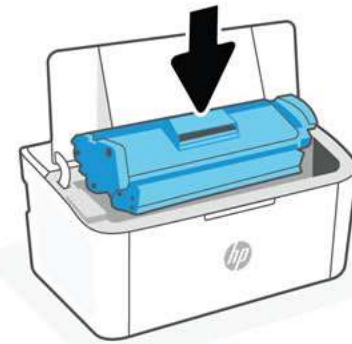
5. Bend the orange tab until it snaps, and then pull to remove the sealing tape from the cartridge.




6. Align the cartridge with the tracks inside the printer, and then push in until firmly seated.

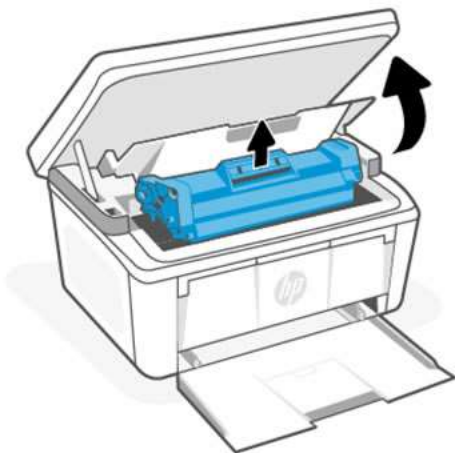


7. Close the toner access door.



 When printing, a pop-up warning message "A used cartridge has been installed" or "counterfeit cartridge" will be displayed on your PC screen. please click "confirm" and continue to use normally.

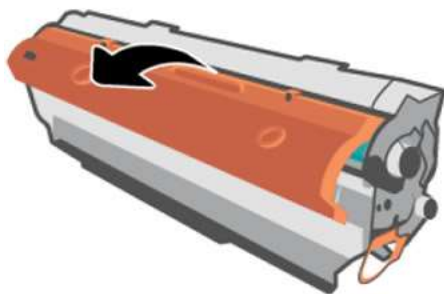
1. Open the toner access door, and then remove the cartridge.



2. Remove the new cartridge from its packaging.



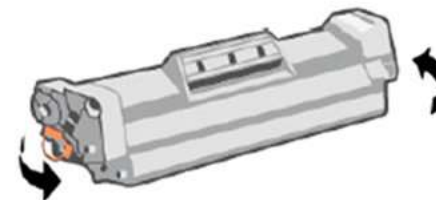
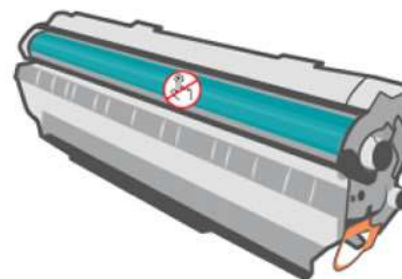
3. Remove the orange cover from the cartridge.



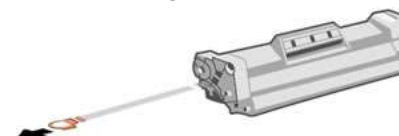
4. Grasp the cartridge by its sides, and then rock the cartridge side to side five or six times to evenly distribute the toner.

**CAUTION:**

Do not touch the imaging drum surface. Fingerprints can cause print quality problems.



5. Bend the orange tab until it snaps, and then pull to remove the sealing tape from the cartridge.



6. Align the cartridge with the tracks inside the printer, push in until firmly seated, and then close the toner access door.

